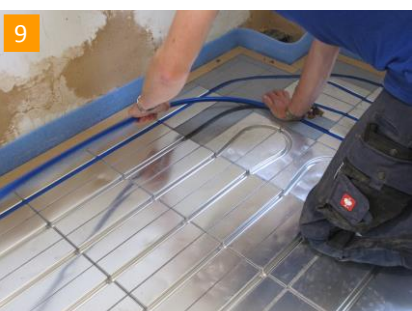
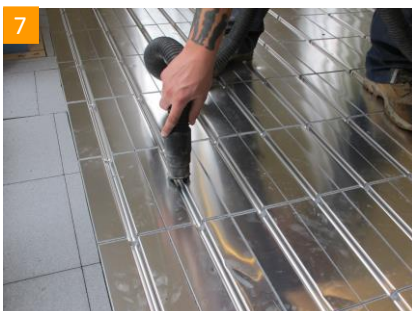
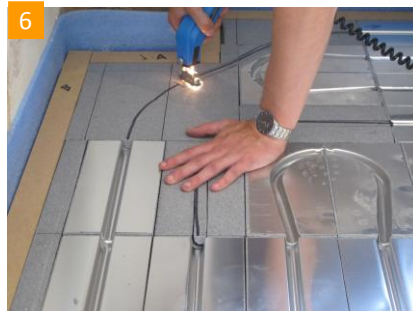


## System IDEAL NEO19 Installation Guide



- 1 Install perimeter insulation to walls and position support battens on a dry and level load bearing surface.
- 2 For best results IDEAL NEO 19 panels should be adhered to the substrate using non solvent based adhesive such as JUPITER PowerPrimer.
- 3 Panels can should be adhered to substrate according to supplied layout drawing. It is recommended that a 'dry' installation run is done first.
- 4 NEO19 panels can be snapped or cut to size.
- 5 Mark pipe channels in front of manifold.
- 6 Individual pipe channels can be cut using the hot wire cutter. Tip! Make pipe channels wavy when cutting long, straight channels to prevent pipe from popping out.
- 7 Vacuum pipe channels before installing pipe.
- 8 To successfully install pipe use pipe reel to hold pipe coil.
- 9 Pipe can pressed into channels by hand around bends and
- 10 Installed best by foot on long straight runs.