

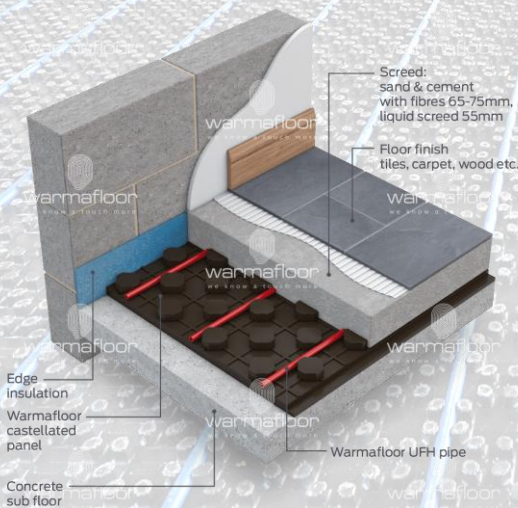
- Robust 18mm vacuum formed castellated panels
- Suitable for sand/cement or anhydrite screeds

The JUPITER System CASTELLATED system is delivered with or without combined insulation. For ground floor installations where a certain degree of insulation is required to meet Building Regulations, the CASTELLATED panels are delivered just

For upper floors, or where the insulation requirement is equal to 0.75 m²K/W the castellated panels are delivered with integral 30mm EPS.

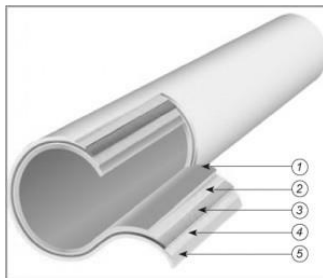
Panels overlap and interlock to form continuous layer. 16mm JUPITER multi-layer pipe is clipped between the raised studs

Suitable for 65, 75mm sand/ cement screed or 55mm anhydrite screed.

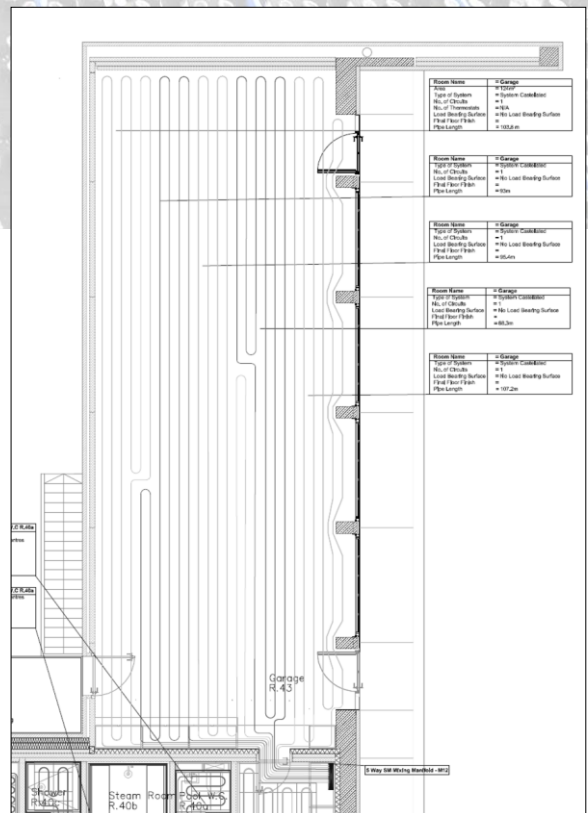


Typical upper floor between joist installation

The JUPITER multi-layer system pipe is manufactured in Germany to DIN 16836, carries a 10 year warranty and has a minimum design life of 50 years.



- 1 Polyethylene RT
- 2 Adhesive
- 3 Aluminium
- 4 Adhesive
- 5 Polyethylene RT



Typical System CASTELLATED pipe layout