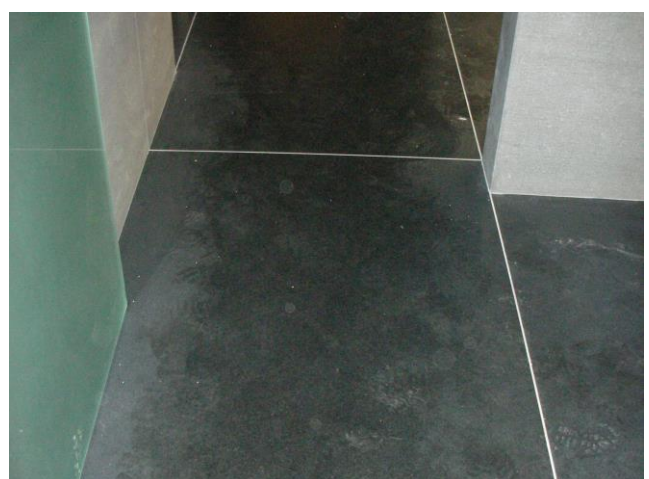


Grosvenor House Apartments, Park Lane. 2008

Architect: Woods Bagot

Contractor: SISK

In 2008 architects Woods Bagot were confronted with the problem of levelling all the existing floors at the Grosvenor House Hotel without introducing heavy, wet levelling screeds. Jupiter were approached to employ the dry levelling slate within all 150 bathrooms throughout the complex. The instruction included, providing a fall within the floor for wet rooms as well as underfloor heating throughout to use the Screed Replacement Tile system as a load bearing surface for enormous marble slabs.



JUPITER



© 2018  
T: 01276 859 066

JUPITER Heating Systems Limited  
[www.jupiterunderfloorheating.com](http://www.jupiterunderfloorheating.com)