

Lincolns Inn, Old Hall, London, 2015

Architect: Rick Mather Architects

Main contractor: OSI Contracts



During removal of the floor a redundant iron pipe underfloor heating system was discovered.



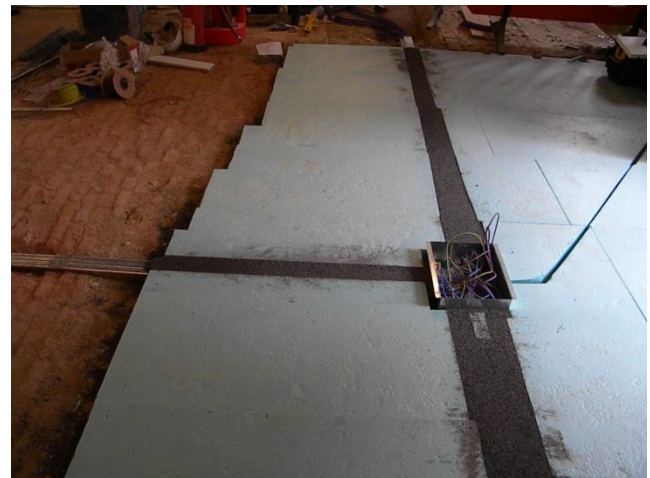
The exposed substrate was then levelled using the JUPITER dry levelling slate



The slate was levelled using a robotic levelling system



The vaulted ceiling of the room below meant that the underfloor heating could not extend across the whole floor



Services with the final floor were catered for within the insulation layer and back filled with the granular levelling slate.



