

## Installing timber floors Installation Guide

1



1



1

### Floating timber floor

The most cost effective method of installing a timber floor on the JUPITER underfloor heating system. Engineered timber floor from 8mm laminate to 20mm can be laid as a floating floor. A thin underlay such as cork or polyolefin should be used and the timber adhered together with wood glue. Self adhesive underlay's can also be used.

Advantages: rapid installation, direct installation

Disadvantages: spongy feel under foot

2



2



2

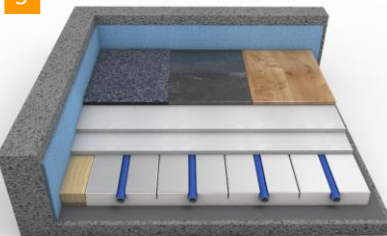
### Mechanically fixed – on battens

Suitable for solid timber floors. Max 20mm recommended thickness. No underlay normally required but suggest brown building paper if using reclaimed straight cut (not t&g) boards. Battens can be installed at 550 centres and should not be fixed to substrate.

Advantages: solid feel under foot

Disadvantages: disrupts UFH pipe layout

3



3



3

### Adhered

Suitable for engineered boards that have to be glued to substrate. As with screed systems, timber floors can be adhered to gypsum based dry screed elements rather than 18mm chipboard.

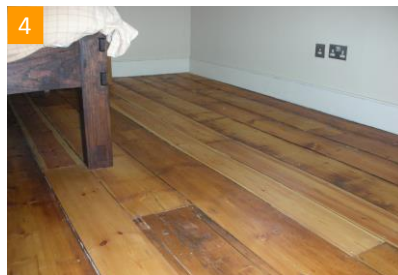
Advantages: solid feel under foot

Disadvantages: requires additional substrate – i.e. Fermacell = higher construction

4



4



4

### Mechanically fixed – to timber joists

Suitable method for both engineered and solid boards.

Advantages: solid feel under foot

Disadvantages: joist positions dictate UFH design.